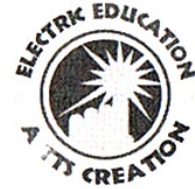




...with the teacher in mind



Easi-ViewTM



User Guide

Version 5

Web: www.wishtrac.com



...with the teacher in mind

Easi-View User Guide

Please Read All Instructions Carefully Before Using



WARNING:

CHOKING HAZARD – Small parts.
Not for Children under 3 years.

- Please retain these instructions for future reference
- Do not allow your Easi-View to come into contact with water or other liquids
- In the event of an electro-static discharge, your Easi-View may malfunction. In this case, please switch it off and then back on again to reset it
- Warranty is void if the case is opened for any reason
- The warranty does not cover any data loss from the unit nor any consequential loss of information

FCC compliance

NOTE:

THE MANUFACTURER IS NOT RESPONSIBLE FOR ANY RADIO OR TV INTERFERENCE CAUSED BY UNAUTHORIZED MODIFICATIONS TO THIS EQUIPMENT. SUCH MODIFICATIONS COULD VOID

Web: www.wishtrac.com



Easi-View User Guide

THE USER AUTHORITY TO OPERATE THE EQUIPMENT

NOTE: This equipment has been tested and found to comply with the limits for a Class B digital device, pursuant to Part 15 of the FCC Rules. These limits are designed to provide reasonable protection against harmful interference in a residential installation. This equipment generates, uses and can radiate radio frequency energy and, if not installed and used in accordance with the instructions, may cause harmful interference to radio communications. However, there is no guarantee that interference will not occur in a particular installation.

If this equipment does cause harmful interference to radio or television reception, which can be determined by turning the equipment off and on, the user is encouraged to try to correct the interference by one or more of the following measures:

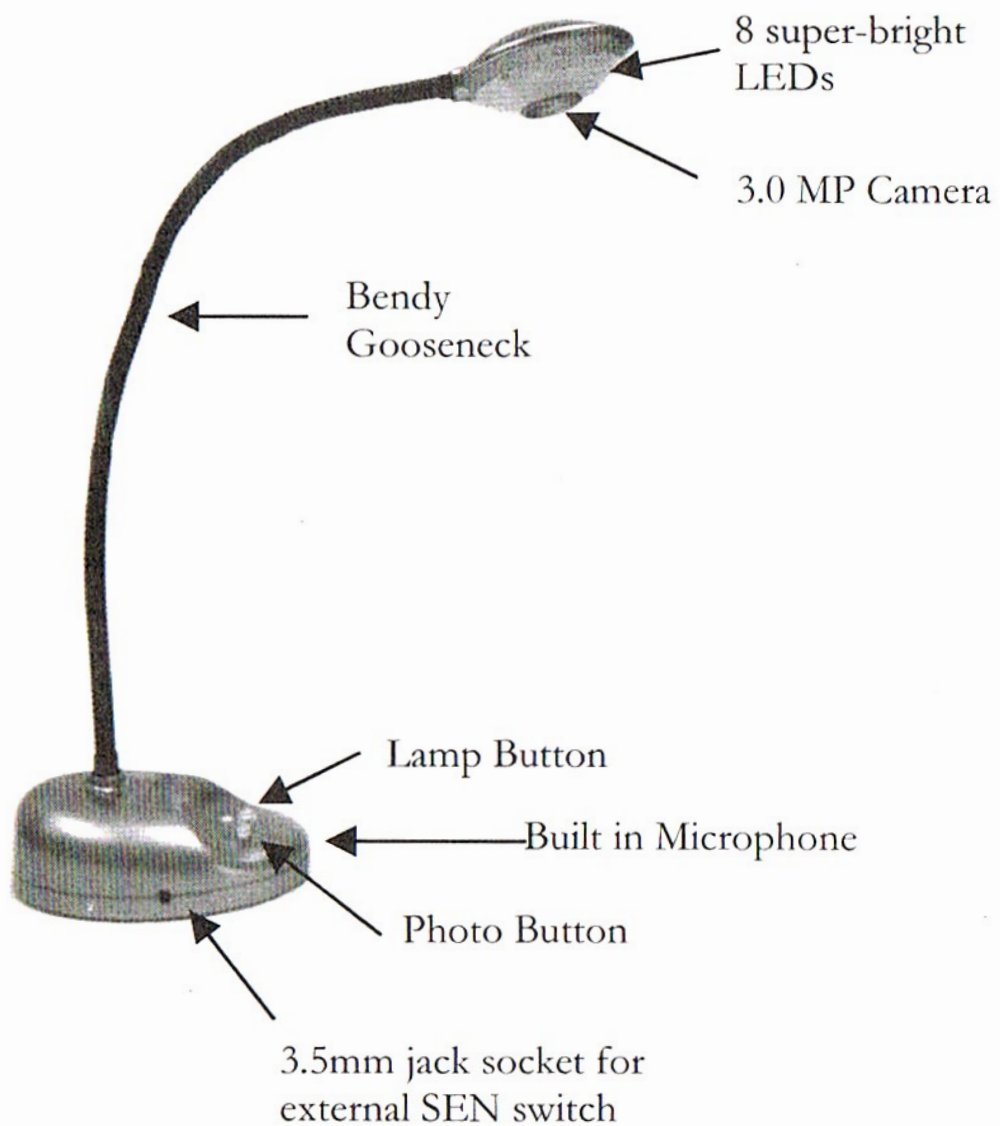
- Reorient or relocate the receiving antenna.
- Increase the separation between the equipment and receiver.
- Connect the equipment into an outlet on a circuit different from that to which the receiver is connected.
- Consult the dealer or an experienced radio/TV technician for help



...with the teacher in mind

Easi-View User Guide

Know Your Easi-View



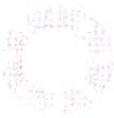
Web: www.wishtrac.com

Easi-View Controls

There are two buttons on the base of the Easi-View:



- Press the snapshot button to take a new picture.



- Press the Light button to turn on the LEDs. Pressing the button repeatedly makes the LEDs brighter.

In addition to the camera button, Easi-View has a 3.5mm mono jack socket so that external switches can be used to take pictures.

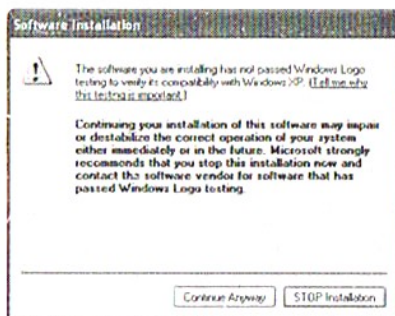
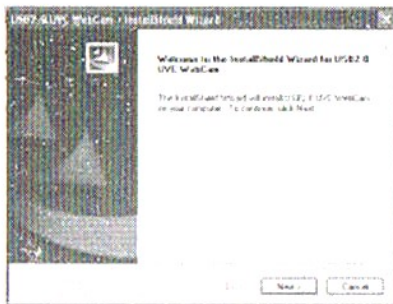
Connecting to a PC

- Plug the Easi-View into an available USB socket.
- The first time Easi-View is connected to the PC, it will automatically install the drivers and may require the PC to be rebooted depending on your operating system.
- The PC will recognise the device as a USB Video device and it will appear as a video device in the Scanners and Cameras section in “My Computer”.

Easi-View User Guide

Installing Easi-View (PC Only)

The procedure below is for windows XP(Compatible with Vista).

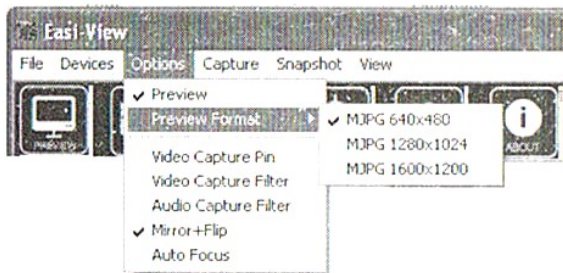


- Connect the Easi-View to a USB port on your PC. Insert the CD into your PC and the setup program should launch automatically. If it does not launch automatically, double click the “setup.exe” icon. Click the Install button to continue.
- Click the next button to continue.

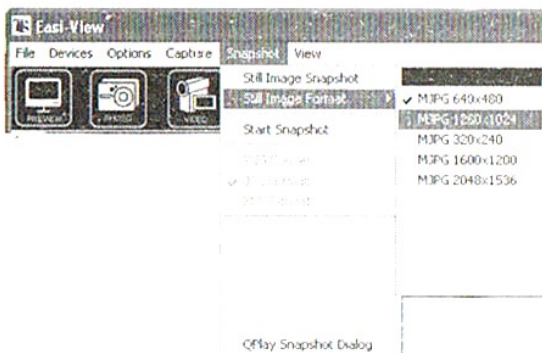
- The installer will now copy the required files to your PC. It will also install DirectX if required.

- If you see this screen, click “Continue anyway”.
- Click “Finish” to complete the installation.

Setting preview and snapshot resolution



The preview resolution can be set from the options menu.



The Still picture resolution is set separately using the snapshot menu.

Easi-View User Guide

Taking pictures



To take a picture use the snapshot button on the base of the Easi-View, or simply click on the “photo” icon. To view your pictures, select “open my pictures” in the “View” menu and navigate to the folder which will be saved in date order.



If the image appears upside down, use rotate to flip the image so it is viewed correctly.



The Easi-View has an autofocus feature. You can re-focus at any time by clicking on the focus icon.

Video capture



To capture live video, just click on the “video” icon. The icon will turn red and you will be asked for confirmation. To stop recording, just click on the icon once more. In the “capture” menu, there is an option to set the maximum capture time to prevent very large files being created

Using Easi-View as a Web Cam

The Easi-View has a built in microphone and can be used as a web cam with popular applications such as Messenger.

Technical specification

- 3.0 Mega Pixel true resolution
- Auto Focus (10cm minimum)
- 8 Super bright LEDs

Troubleshooting

Easi-View is designed to work reliably and predictably in all normal conditions. However, it is possible that problems may occur. Please check the following before contacting technical support.

Problem	Unit malfunctions when LEDs are on
Solution	Connected to a USB 1.0 port which cannot supply sufficient current. Connect to a USB 2.0 port.
Problem	Image is too dark
Solution	Press the light button or use an external light source.

Easi-View User Guide

Support & Warranty

This product is provided with a one-year warranty for problems found during normal usage. Mistreating the Easi-View™ or opening the unit will invalidate this warranty. All out of warranty repairs will be subject to a replacement fee.

Please visit www.tts-group.co.uk for latest product information.

Email feedback@tts-group.co.uk for technical support.

TTS Group Ltd
Park Lane Business Park
Kirkby-in-Ashfield
Nottinghamshire, UK
NG17 9GU

Freephone: 0800 318686
Freefax: 0800 137525

